

Postal Code 78704

Residential Statistics



October 2021

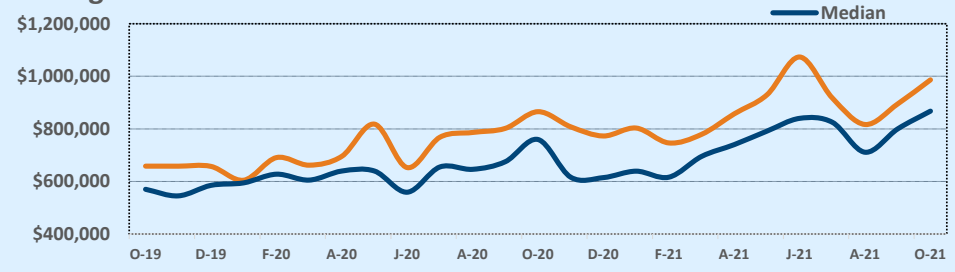
Listings	This Month			Year-to-Date		
	Oct 2021	Oct 2020	Change	2021	2020	Change
Single Family Sales	33	60	-45.0%	437	420	+4.0%
Condo/TH Sales	29	34	-14.7%	430	324	+32.7%
Total Sales	62	94	-34.0%	867	744	+16.5%
New Homes Only	3	10	-70.0%	80	100	-20.0%
Resale Only	59	84	-29.8%	787	644	+22.2%
Sales Volume	\$61,164,473	\$81,342,559	-24.8%	\$760,496,993	\$553,807,552	+37.3%
New Listings	78	118	-33.9%	928	1,146	-19.0%
Pending	--	--	--	--	--	--
Withdrawn	2	12	-83.3%	31	123	-74.8%
Expired	2	12	-83.3%	31	123	-74.8%
Months of Inventory	1.2	2.3	-47.3%	N/A	N/A	--

Price Range	This Month			Year-to-Date		
	New	Sales	DOM	New	Sales	DOM
\$149,999 or under	--	--	--	--	--	--
\$150,000- \$199,999	--	--	--	8	5	42
\$200,000- \$249,999	1	1	6	20	26	50
\$250,000- \$299,999	2	2	7	48	38	18
\$300,000- \$349,999	4	4	5	47	41	19
\$350,000- \$399,999	4	--	--	43	37	29
\$400,000- \$449,999	5	2	5	35	45	31
\$450,000- \$499,999	1	3	28	31	35	26
\$500,000- \$549,999	2	2	9	27	31	25
\$550,000- \$599,999	1	1	2	36	34	21
\$600,000- \$699,999	9	5	14	89	86	33
\$700,000- \$799,999	7	6	32	108	86	22
\$800,000- \$899,999	11	9	13	73	88	26
\$900,000- \$999,999	8	3	6	77	41	44
\$1M - \$1.99M	16	20	19	230	233	28
\$2M - \$2.99M	6	4	66	45	36	26
\$3M+	1	--	--	11	5	54
Totals	78	62	19	928	867	28

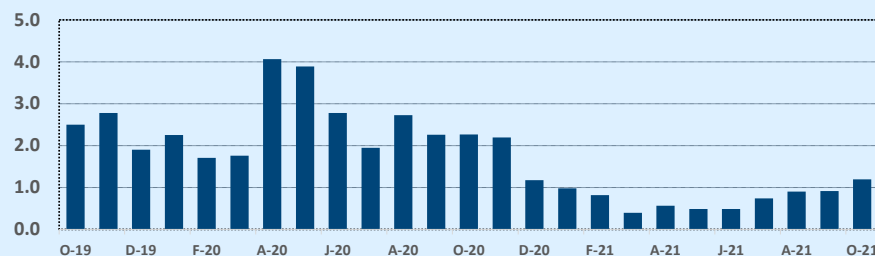
Average	This Month			Year-to-Date		
	Oct 2021	Oct 2020	Change	2021	2020	Change
List Price	\$964,843	\$882,322	+9.4%	\$843,176	\$758,907	+11.1%
List Price/SqFt	\$583	\$477	+22.2%	\$529	\$446	+18.5%
Sold Price	\$986,524	\$865,346	+14.0%	\$877,159	\$744,365	+17.8%
Sold Price/SqFt	\$604	\$470	+28.4%	\$551	\$439	+25.5%
Sold Price / Orig LP	103.5%	98.8%	+4.7%	104.2%	98.6%	+5.7%
Days on Market	19	51	-62.8%	28	42	-32.8%

Median	This Month			Year-to-Date		
	Oct 2021	Oct 2020	Change	2021	2020	Change
List Price	\$849,000	\$757,498	+12.1%	\$729,000	\$648,700	+12.4%
List Price/SqFt	\$541	\$469	+15.4%	\$496	\$434	+14.4%
Sold Price	\$867,500	\$759,500	+14.2%	\$760,000	\$639,450	+18.9%
Sold Price/SqFt	\$572	\$461	+24.2%	\$511	\$429	+19.1%
Sold Price / Orig LP	100.0%	98.8%	+1.2%	100.4%	99.0%	+1.4%
Days on Market	7	34	-80.6%	6	19	-68.4%

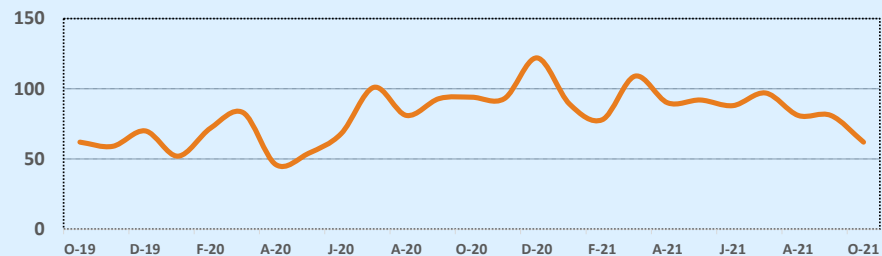
Average & Median Sales Price - Last Two Years



Months of Inventory - Last Two Years



Number of Sales - Last Two Years



Based on information from the Austin Board of REALTORS® (alternatively, from ACTRIS). Neither the Board nor ACTRIS guarantees or is in any way responsible for its accuracy. The Austin Board of REALTORS®, ACTRIS and their affiliates provide the MLS and all content therein "AS IS" and without any warranty, express or implied. Data maintained by the Board or ACTRIS may not reflect all real estate activity in the market.